

## Warehouse display storage goods shelves



VMSworks storage goods shelves ,Excellent quality,professional manufacturer.specialize in all kinds of goods shelves and rack ,superb quality ,cheap price ,mainly service for warehouse .

With the high quality steel plate material,reasonable design,professional manufacturing ,strong welding,strong knock down structure,VMS just supply the best products ,could suit your different demands with the different weight loading .

### Features

- All-steel components ensure superior strength.
- Adjustable shelf ,adjust storage space to your specific needs.
- Strong welding structure connect the brace and cross brace
- With more than one reinforcements, more loading weight
- Utomatic electrostatic powder coating
- Knock down and easy assembling construction
- With huge loading capacity for each shelf
- Different Dimensions and styles available
- Knock down structure and flat packaging
- Butterfly buckle,easy assembly,and more strong connecting
- Guarantee (years): 5 years
- Flat packaging with international standard 5 layers carton or design according to actuality

### Accessories (available separately)

- Column
- Shelves

Technical Specification		Color		Material
Height	2000mm	All colors on Ral & Pantone Color Chip are available (some finishes may attract surcharges)		frame: 1.2mm cold rolled steel plate Column:1.2mm thickness steel plate Shelf and others: 0.8mm thickness
Width	1000mm			
Depth	600mm			
Items No.	Packaging Volume	Loading Qty(pcs)		Thickness
R-M1	0.35cbm	20 GP	100PCS	40*60/40*40*1.0/25*50MM
		40HQ	360PCS	
Certificate	ISO9001, ISO14001,OHSAS18001,BV			
MOQ	20GP container could be mixed loading with 1-4 models			

**NOTE: Above are only our standard specifications and configurations .**

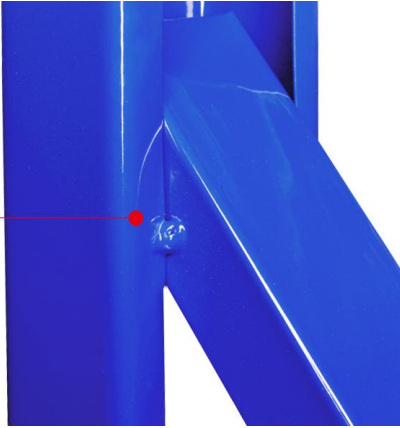
**Pls contact VMSworks for more customizable sizes and specifications according to your individual requirements .**

More Details

Strong welding

butterfly buckle

patented shelf design



reinforcements



wider grounding lug, more stable



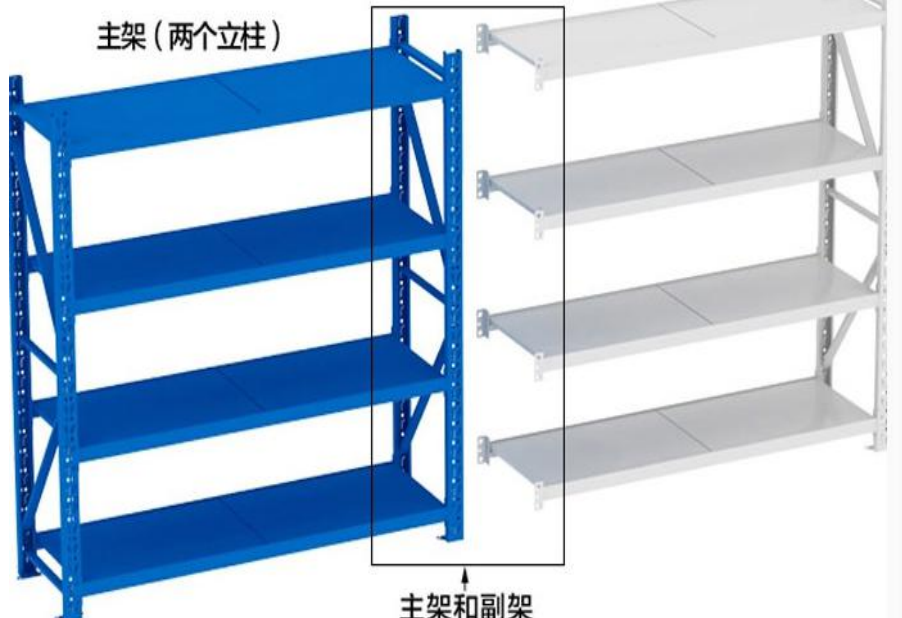
strong column



THE FRAME IS MADE UP OF TWO COLUMNS, DEPUTY FRAME IS A PILLAR, THE FRAME CAN BE USED ALONE, VICE FRAME CAN NOT BE USED, MUST BE ATTACHED IN THE MAIN FRAME IS USED

主架 (两个立柱)

副架 (一个立柱)



主架和副架  
共用一根立柱

VMS has more items for your consideration ,pls contact us directly for more customized solutions .



